

YUTECH pH ANALYZER AND pH CONTROL SYSTEM

BASED ON YUTECH'S A15 INTELLIGENT ANALYZERS AND SYSTEMS PLATFORM

PRESENTATION AND DATASHEET



YUTECH



YUTECH pH ANALYZER AND pH CONTROL SYSTEM



YUTECH

**Servicing the Sugar
Industry since 1978**

YU Technologies Pvt. Ltd.

HO & Works: B 8/5, MIDC, Miraj, 416 410, Distt: Sangli, Maharashtra, India. T: +91 233 2644042, +91 916 832 4851, +91 916 832 5127 / 8.

E: info@yutech.in; sale@yutech.in W: www.yutech.in; www.yutechautomation.com

www.yutechautomation.com; www.yutech.in; sale@yutech.in

pH ANALYZER AND pH CONTROL SYSTEM

BASED ON YUTECH'S A15 INTELLIGENT ANALYZERS AND SYSTEMS PLATFORM



YUTECH



pH ANALYZER

pH ANALYZER AND pH CONTROL SYSTEM

PRODUCT CODE:

ANALYZER MODEL: A15PHAACPETRC1D4R4FM,

ANALYZER AND CONTROLLER MODEL:

A15PHAACPETRC2D4R4FMC

ANALYZER AND CONTROLLER WITH ETHERNET MODEL:

A15PHAACPETRC2D4R4FMC

EM (Modbus TCP/IP)



pH ANALYZER AND CONTROL SYSTEM

pH ANALYZER AND pH CONTROL SYSTEM

BASED ON YUTECH'S A15 INTELLIGENT ANALYZERS AND SYSTEMS PLATFORM

SALIENT FEATURES



- pH Analyzer and Electrode combination targets sensing of Hydrogen Ion Concentration (pH) which defines the Alkalinity or Acidity of Liquids or Syrups.
- YUTECH pH Analyzer works with any Combination Type pH Electrode and can accept RTD PT-100 Signal either from Separate Sensor or RTD embedded in pH Electrode.
- pH Analyzer plays a crucial role in Sugar Process Automation and helps in Stabilizing the overall Sugar Process as well as Sugar Colour and Quality.
- The YUTECH Intelligent Programmable pH Analyzer is a State-of-the-Art System having Built-in Fuzzy Logic for Accurately Sense, Analyze, Calculate and Derive Masecuite pH with Temperature Compensation. Furthermore, the Algorithm can also detect pH Electrode Decay and raise Alarm as well as notify the SCADA / PLC / DCS.
- Accurate pH reading ensures better Process Control and helps to maintain constant Masecuite / Melt / Molasses / Syrup pH thus results in Better Sugar Colour and Quality and Production Efficiency and Minimum Process Losses.

pH ANALYZER AND pH CONTROL SYSTEM

BASED ON YUTECH'S A15 INTELLIGENT ANALYZERS AND SYSTEMS PLATFORM

SALIENT FEATURES



- pH Sensor or Electrode Detects Hydrogen Ion Concentration as a function of emf. This Signal is then Processed in Analyzer to obtain pH Reading on a Scale of 0 – 14pH.
- YUTECH pH Analyzer is equipped with Intelligent Electrode Decay Calculation Algorithm which generates Alarm when Electrode Weakens and also generates Alarm when Change of Electrode is needed.
- Very Easy Calibration and Online Electrode Recalibration using Set-7 Function
- In-Built Automatic Temperature Compensation
- In-Built Self Cleaning and Washing of Electrode with pre-adjustable timing cycle
- 4-20 mA Output, Separate Modbus and Ethernet Communications
- On-line Calibration Software “YUTECH-AccessApp-pH” provides Remote Access to pH Analyzer for Calibration, Compensation and Trouble Shooting.

pH ANALYZER AND pH CONTROL SYSTEM

BASED ON YUTECH'S A15 INTELLIGENT ANALYZERS AND SYSTEMS PLATFORM

SALIENT FEATURES



Innovative Features for Ease of Operation and to save on Installation Cost and Materials:

- **Built-in pH Equation**
- **Built-in Temperature Compensation**
- **Built-in PID Controller:**
 - Highly Accurate Fuzzy Logic PID Controller developed especially for Process Control and Flow Control Applications.
 - pH Control Logic built especially for Juice Liming Process
 - Remote Set Variable Facility
- **Built-in 3-Point Auto/Manual Station to Select Control Output from:**
 - Selector Switch for Local PID Output or DCS/PLC PID Output
 - Manual Output for Trouble Shooting

This feature simplifies installation by eliminating need for installing a Junction Box and Extra wiring.

pH ANALYZER AND pH CONTROL SYSTEM

BASED ON YUTECH'S A15 INTELLIGENT ANALYZERS AND SYSTEMS PLATFORM

SALIENT FEATURES



Innovative Features for Ease of Operation and to Save on Installation Cost and Materials:

- **Built-in Communication Links: See the Product Code to select the desired protocol**

Ethernet:

- a. Modbus TCP/IP Ethernet Communication Protocols
- b. External PID Controller Calibration Facility from DCS / PLC- SCADA / HMI System via Ethernet. Control Variables can be accessed and changed from DCS / PLC- SCADA / HMI.
- c. pH Data is Communicated for Data Acquisition and Data Storage within DCS / PLC- SCADA / HMI.

RS485: Modbus RTU on request in Base Model.

USB Communication Facility: For Calibration from PC or Android using System's USB Port. (This facility is available only in Controller with Ethernet Models).

YUTECH Access App: Calibration Software can be installed in a PC or Android.

pH ANALYZER AND pH CONTROL SYSTEM

BASED ON YUTECH'S A15 INTELLIGENT ANALYZERS AND SYSTEMS PLATFORM

SALIENT FEATURES



pH Electrode and Electrode Mounting, and Washing Assembly with Water Jacket Juice Cooler:

- **YUTECH pH Analyzer works with any Combination Type pH Electrode**
- **pH Electrode is sheathed for protection.**
- **Wash Water Spray Tube of Stainless Steel construction is connected to a Solenoid Valve for Automatic Washing of Sensor Electrode.**
- **Periodic Cleaning by a signal from the Analyzer.**
- **Pneumatic Cylinder lifts the Electrode for cleaning.**
- **Juice Cooler uses Cold Water Jacket for cooling.**
- **Mounting, and Washing Assembly with Water Jacket Juice Cooler is Fabricated in MS or SS**

TEMPERATURE SENSOR:

- **RTD PT 100 Temperature Sensor with Thermowell constructed out of Solid SS Bar.**

pH ANALYZER AND pH CONTROL SYSTEM

BASED ON YUTECH'S A15 INTELLIGENT ANALYZERS AND SYSTEMS PLATFORM

TECHNICAL SPECIFICATIONS



- **Power Supply:** 85 - 265 VAC, 50 – 60Hz
- **Analyzer Enclosure:** IP67 Field Mounted Dust and Moisture Proof
- **Input:**
 - pH Electrode Signal
 - RTD PT 100 Temperature Sensor Signal
 - **Calibration:**
 - From Keyboard
 - USB Port for Windows / Android-based YUTECH-AccessApp-BA
- **Display:**
 - **Base Model:** 4 Digit LED Dual Display
 - **Controller and Controller with Ethernet Model:** 4 Digit LED Quad Display
 - **Sensor Cleaning and Washing Output:** In-Built Potential Free Relay
- **Sensor Cleaning Timing Cycle:** Adjustable from Keyboard, default 15 Minutes
- **Signal Output:**
 - 4 - 20 mA Temperature Compensated pH Output
 - 4 - 20 mA PID Output (Controller and, Controller with Ethernet Models)
 - 2 Potential-Free Relay Outputs
- **Communications:**
 - Ethernet Communication Protocol: Modbus-TCPIP, in Controller with Ethernet Model
 - Modbus RTU, in Controller Model

pH ANALYZER AND pH CONTROL SYSTEM

BASED ON YUTECH'S A15 INTELLIGENT ANALYZERS AND SYSTEMS PLATFORM

TECHNICAL SPECIFICATIONS



YUTECH

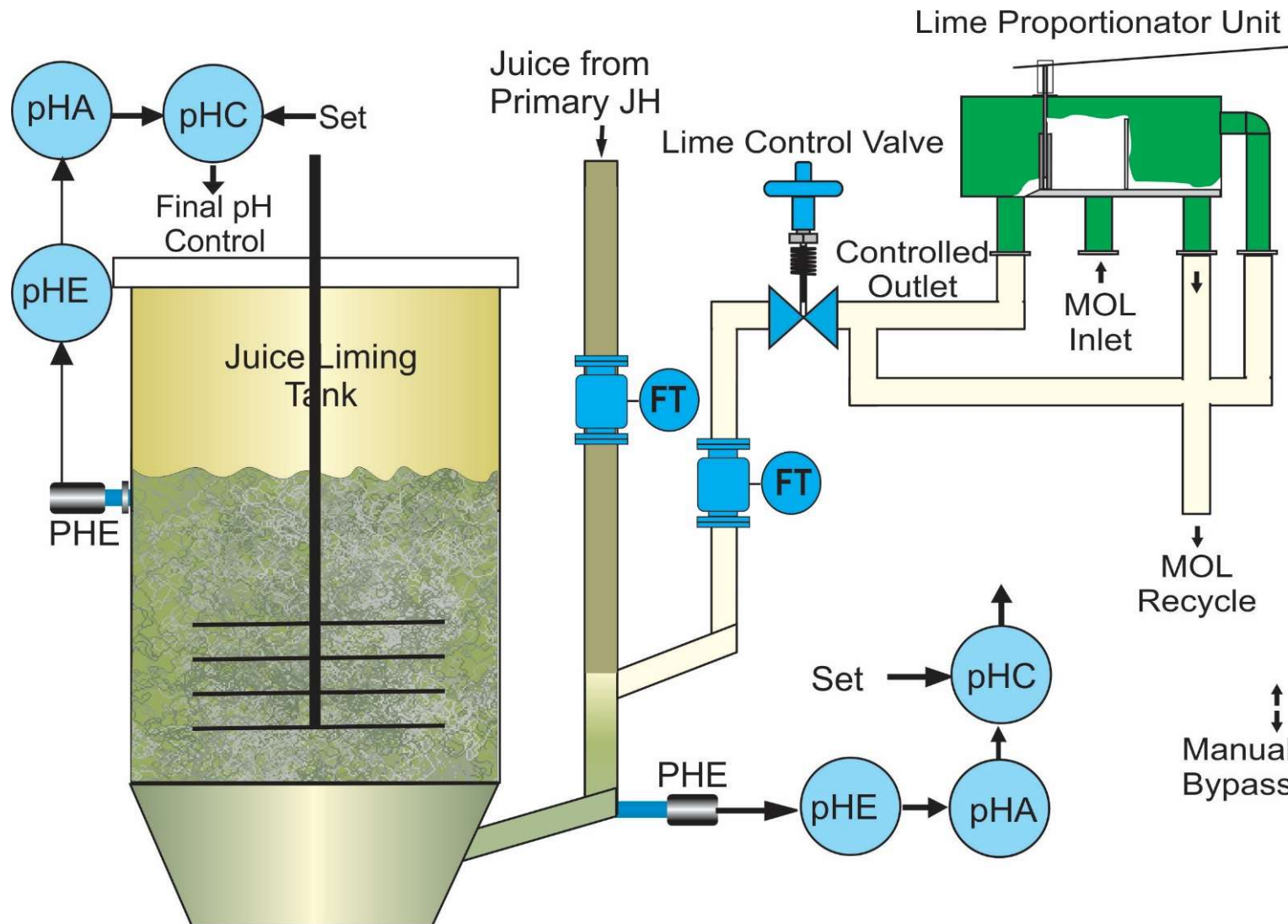
Product Code:

- A15PHAACPETRC1D4R4FM – A15FCA means Fluid Consistency Analyzer of A15 Product Family
- A15PHAACPETRC1D4R4FM – AC Power Supply
- A15PHAACPETRC1D4R4FM – Analog Inputs and Outputs
 - AI (PETR): pH Electrode and RTD PT100; AO (C1): 1 Ch. 4-20mA (pH)
 - AI (PETR): pH Electrode and RTD PT100; AO (C2): 2 Ch. 4-20mA (Ch. 1: pH and Ch. 2: PID)
- A15FCAACSCTRC1D4R4FM: Digital Inputs and Outputs
 - DI (D4): 4 DIs (24VDC); DO (R4): 4 Relay Outputs (24VDC, 1A)
- A15PHAACPETRC1D4R4FM – Field Mounted Enclosure
- A15PHAACPETRC1D4R4FMC – Analyzer with Controller Model
- A15PHAACPETRC1D4R4FMCCEM – Analyzer with Controller and Ethernet Model, EM: Modbus TCP/IP Communication (Ethernet)
- **Range:**
 - Measurement Range 0 – 14 pH
 - Temperature Compensated Measurement Range 2 – 12 pH

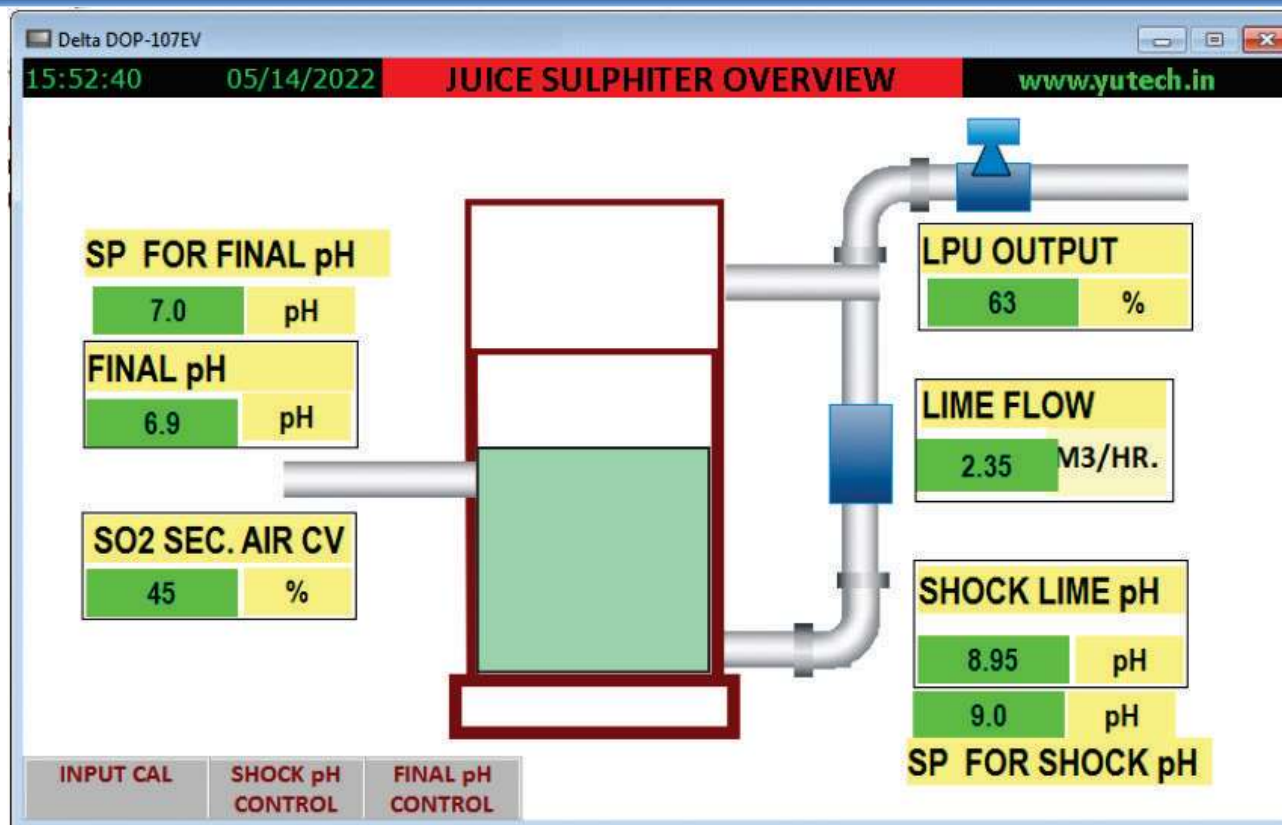
JUICE LIMING AND FINAL JUICE pH CONTROL SYSTEM



SCHEMATIC DIAGRAM



SCREENSHOT



JUICE LIMING AND SULPHITOR AUTOMATION:

- Shock Limed Juice pH Sensing
- Shock Limed Juice Temperature Sensing
- Final Juice pH Sensing
- Final Juice Temperature Sensing
- Lime Proportionator Control with respect to Temperature Compensated Shock Limed Juice pH
- Secondary Air or Molten Sulphur Pump VFD Control with respect to Temperature Compensated Final Juice pH

DCS or PLC Based Turnkey Automations or Standalone Control Systems:

- Complete Sugar Mill Automation with all Loops like Cane Feeding, Mill Speed Controls, Imbibition and Juice Flow Controls etc
- Complete Sugar Process Automation with Loops like Evaporator, Pans, Continuous Pans, Melters Conditioners, Direct Contact Heaters, Condensers etc
- Complete Sugar Refinery / Pharma Grade Sugar Plant Automation with Loops like Pans, Continuous Pans, Melters, Melt Clarifier, Melt Filtration Systems, Direct Contact Heaters, Condensers etc
- Complete Boiler and Power Plant Automation
- Complete Sugar Plant Automation and Instrumentation
- Complete Distillery Automation and Instrumentation
- Complete Process Plant (Pharma / Food Processing / Cement / Steel) Automation and Instrumentation
- VCP / CVP / Batch Pan Automation
- Condenser Automation
- Continuous Centrifugal Machine Automation based on CSD or Iris Valve
- Evaporator and FFE Automation
- Direct Contact Heater Automation
- Vertical Crystallizer
- pH Control System

YUTECH BRIX ANALYZER AND AUTO CLEANING SELF RETRACTABLE BRIX SENSOR BASED ON YUTECH'S A15 INTELLIGENT ANALYZERS AND SYSTEMS PLATFORM



YUTECH



A15BAACBSRC1D4R2FM1

BRIX ANALYZER

PRODUCT CODE:

BASE MODELS: A15BAACBSRC1D4R2FM,
CONTROLLER MODEL: A15BAACBSRC2D4R4FMC
CONTROLLER WITH ETHERNET MODEL:
A15BAACBSRC2D4R4FMCEM (Modbus TCP/IP)

AUTO-CLEANING SELF-RETRACTABLE BRIX SENSOR

PRODUCT CODE:
ASDBSRSCW1EV03



A15BAACBSRC2D4R2FM1EM

**OTHER YUTECH
ANALYZER
PRODUCTS**



ELECTRODE IN SENSING POSITION

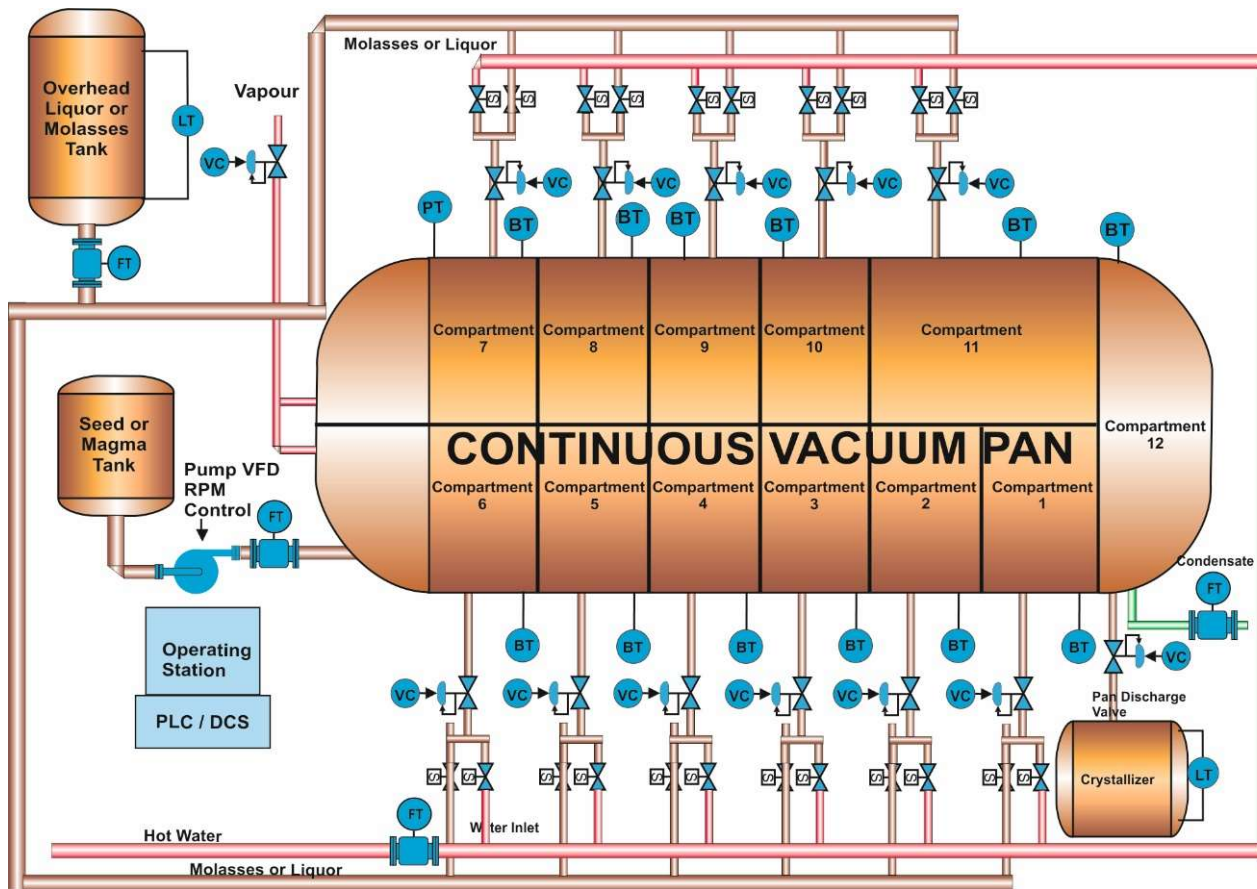


ELECTRODE IN CLEANING POSITION

YUTECH CONTINUOUS VACUUM PAN AUTOMATION USING FLUID CONSISTENCY-BRIX ANALYZER OR BRIX ANALYZER



YUTECH



VERTICAL CONTINUOUS PAN AUTOMATION:

- YUTECH CONSISTENCY-BRIX OR YUTECH BRIX SENSING AND MOLASSES / WATER INTAKE CONTROL FOR EACH COMPARTMENT
- VFD SPEED CONTROL AS PER PAN CHAMBER LEVEL FOR LAST CHAMBER IF INSTALLED
- TEMPERATURE SENSING THROUGHOUT THE PAN CHAMBER TO ENSURE UNIFORM TEMPERATURE INSIDE PAN CHAMBER BODY
- SEED FLOW CONTROL MAINTAINING MOLASSES TO SEED RATIO
- CALENDRIA VAPOUR PRESSURE CONTROL
- STANDALONE SYSTEM FOR PAN CHAMBER AND COMMUNICATION WITH MAIN VCP PLC / DCS SYSTEM

YUTECH FLUID CONSISTENCY-BRIX ANALYZER AND CONTROL SYSTEM

BASED ON YUTECH'S A15 INTELLIGENT ANALYZERS AND SYSTEMS PLATFORM



YUTECH



**FLUID CONSISTENCY-BRIX ANALYZER
AND CONTROL SYSTEM**

FLUID CONSISTENCY-BRIX ANALYZER AND CONTROL SYSTEM

PRODUCT CODE:

ANALYZER MODEL: A15FCAACSCTRC1D4R4FM,

ANALYZER AND CONTROLLER MODEL: A15FCAACSCTRC2D4R4FMC

ANALYZER AND CONTROLLER WITH ETHERNET MODEL:

A15FCAACSCTRC2D4R4FMCEM (Modbus TCP/IP)

MOTORIZED FLUID CONSISTENCY SENSOR

PRODUCT CODE: ASDMSFCSV01

OTHER YUTECH ANALYZER PRODUCTS



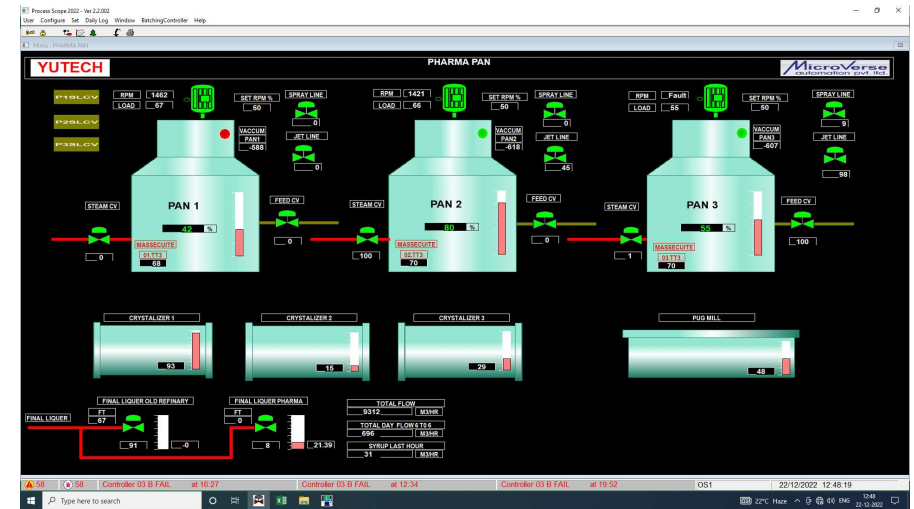
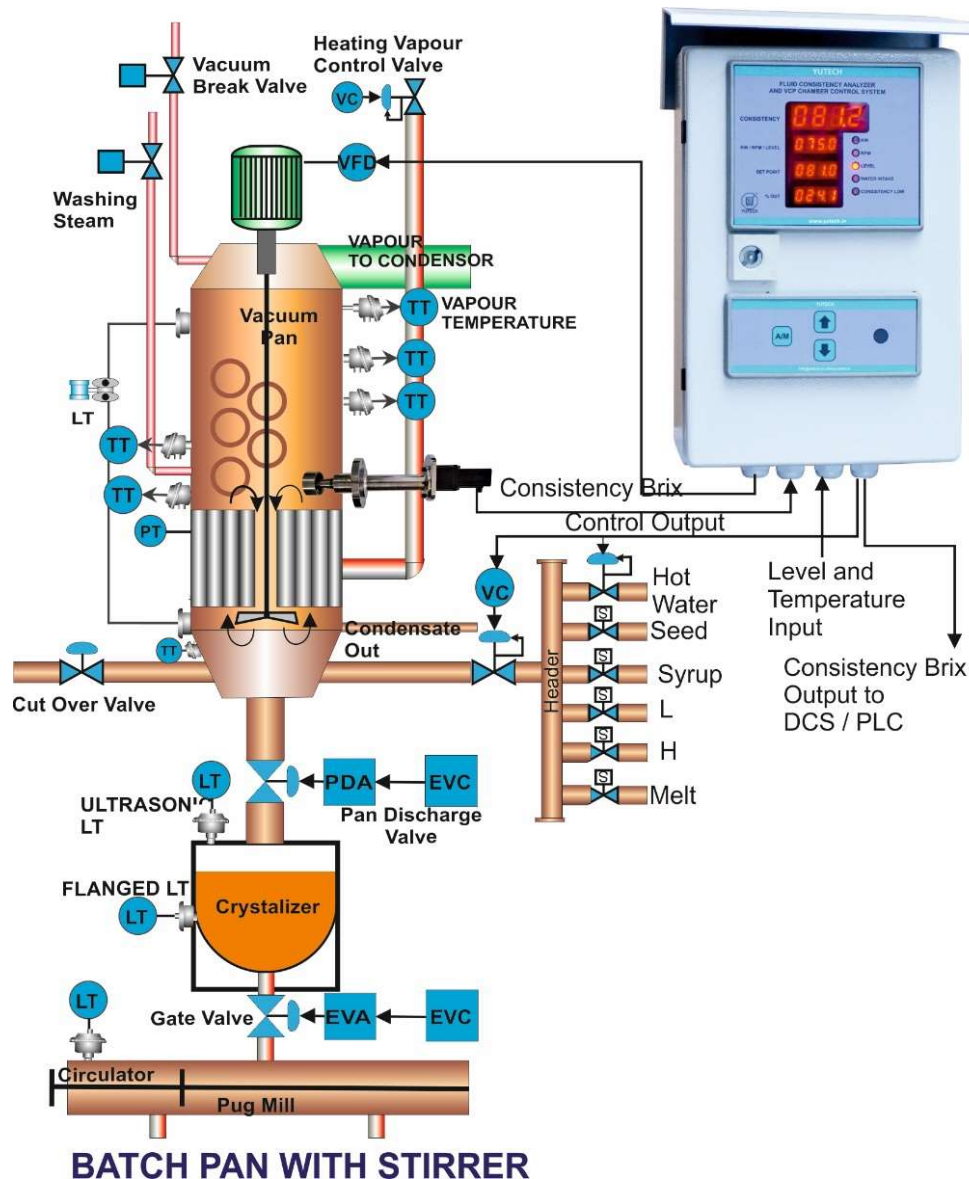
MOTORIZED FLUID CONSISTENCY SENSOR

YUTECH FLUID CONSISTENCY BRUX-ANALYZER AND CONTROL SYSTEM

SCHEMATIC DIAGRAM: BATCH PAN AUTOMATION USING FLUID CONSISTENCY ANALYZER



BATCH PAN WITH MECHANICAL CIRCULATOR / STIRRER

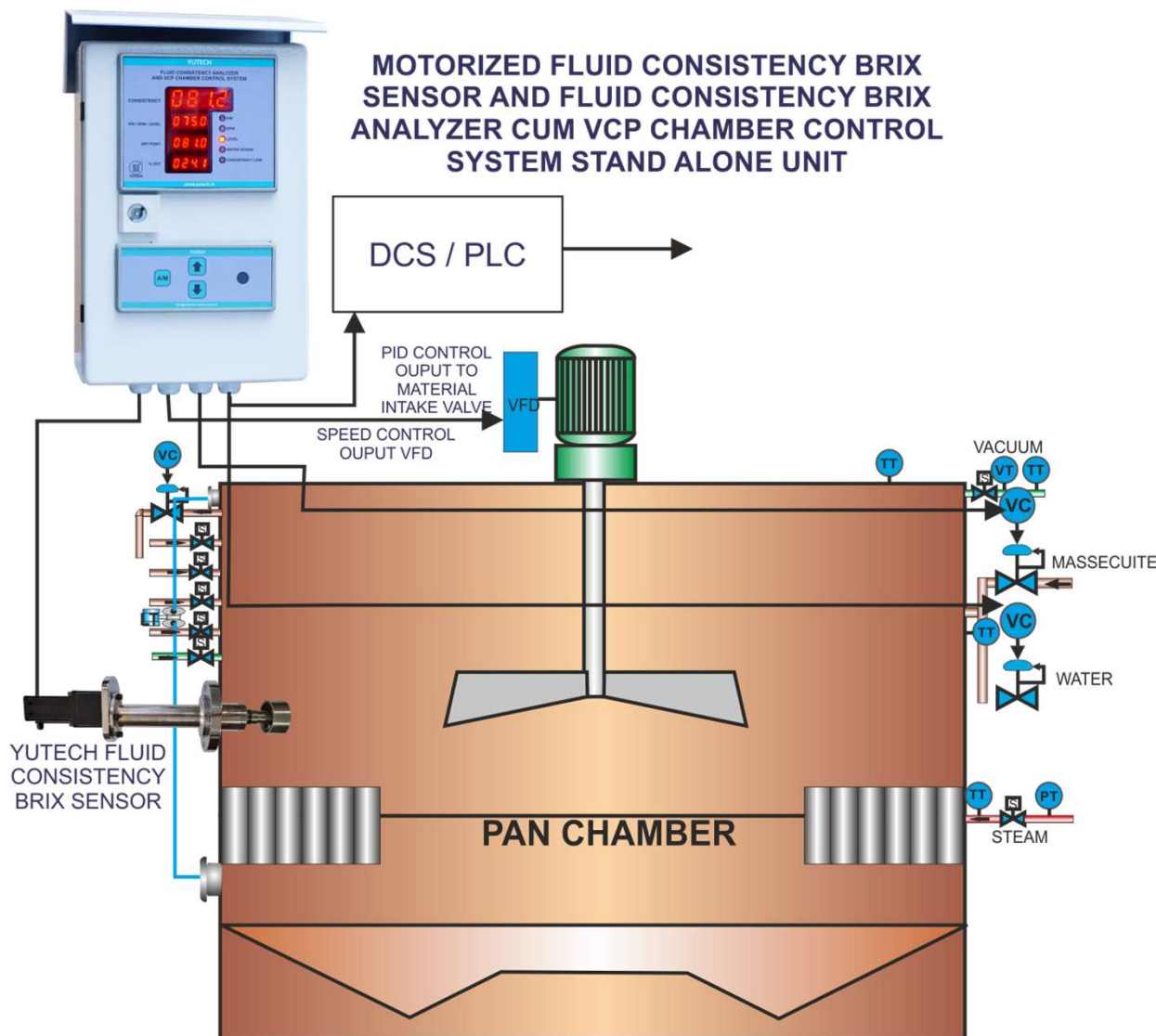


SCREEN SHOT: BATCH PAN AUTOMATION

BATCH PAN AUTOMATION:

- CONSISTENCY-BRIX SENSING AND MATERIAL / WATER INTAKE CONTROL
- VARIABLE BRIX SET-POINT AS PER PAN LEVEL
- VFD SPEED CONTROL AS PER PAN LEVEL
- TEMPERATURE SENSING THROUGHOUT THE PAN TO ENSURE UNIFORM TEMPERATURE INSIDE PAN BODY
- BATCH COMPLETE INDICATION AND DROP SUGGESTION
- STANDALONE SYSTEM OR PLC / DCS BASED SYSTEM

VERTICAL CONTINUOUS PAN AUTOMATION USING FLUID CONSISTENCY-BRIX ANALYZER



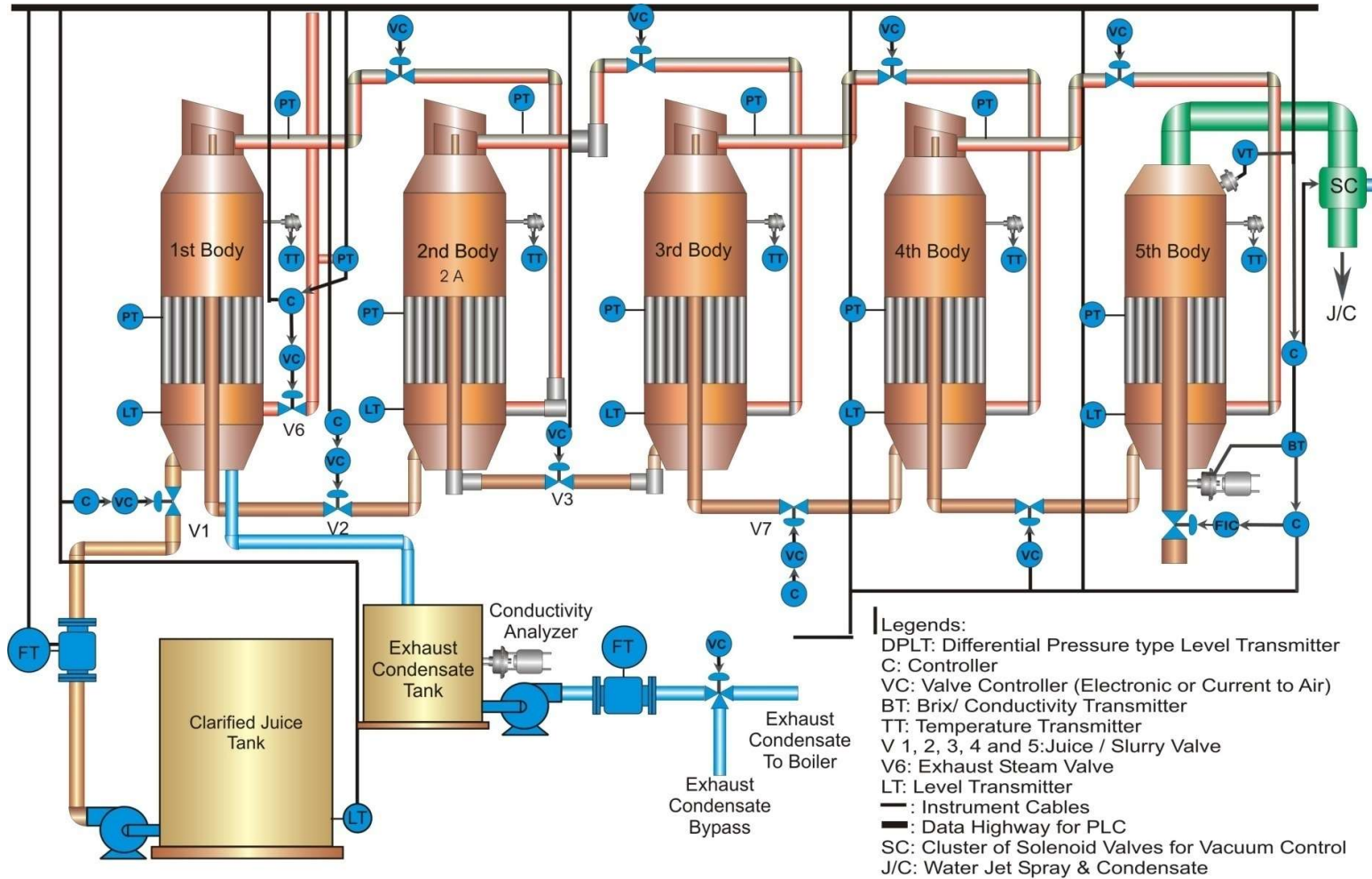
VERTICAL CONTINUOUS PAN AUTOMATION:

- **CONSISTENCY-BRIX SENSING AND MATERIAL / WATER INTAKE CONTROL**
- **VFD SPEED CONTROL AS PER PAN CHAMBER LEVEL**
- **TEMPERATURE SENSING THROUGHOUT THE PAN CHAMBER TO ENSURE UNIFORM TEMPERATURE INSIDE PAN CHAMBER BODY**
- **SEMI-AUTOMATIC DROP CONTROL IN ABNORMAL CONDITIONS**
- **STANDALONE SYSTEM FOR PAN CHAMBER AND COMMUNICATION WITH MAIN VCP PLC / DCS SYSTEM**

YUTECH EVAPORATOR / FFE AUTOMATION USING FLUID CONSISTENCY-BRIX ANALYZER



YUTECH



Evaporator Control System

EVAPORATOR AUTOMATION:

- CONSISTENCY-BRIX, LEVEL AND TEMPERATURE SENSING OF EACH BODY
- HEATING STEAM / VAPOUR TEMPERATURE AND PRESSURE SENSING
- LEVEL AND BRIX MAINTAINED IN EACH BODY
- EXHAUST CONDENSATE CONDUCTIVITY SENSING AND BYPASS
- INTELLIGENT DATA ANALYSIS WITH MAINTENANCE AND CLEANING ALARMING SYSTEM
- PRECEDING BODY LEVEL SYNCHRONIZATION FOR ALL BODIES INCLUDING JUICE TANKS AND CANE CARRIERS

YUTECH CONDENSER CONTROL SYSTEM FOR PANS AND EVAPORATORS

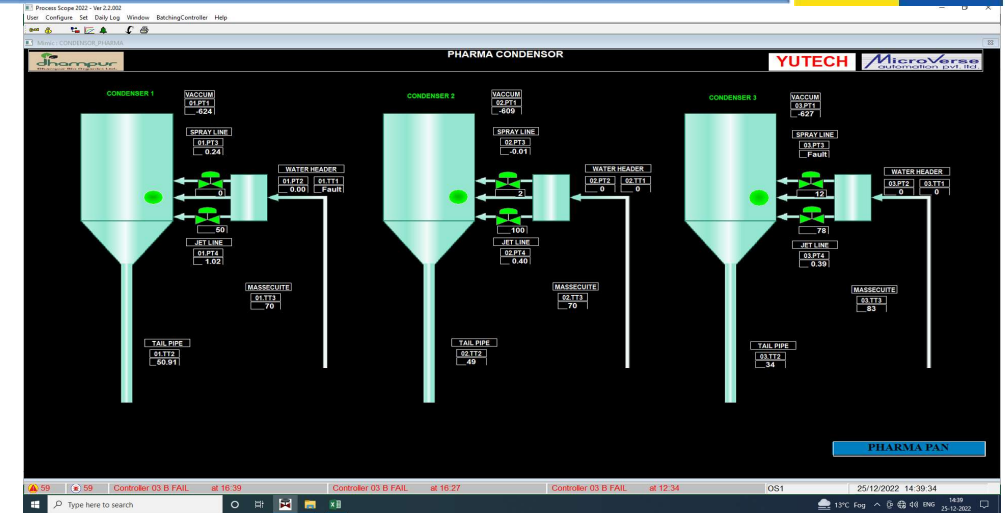
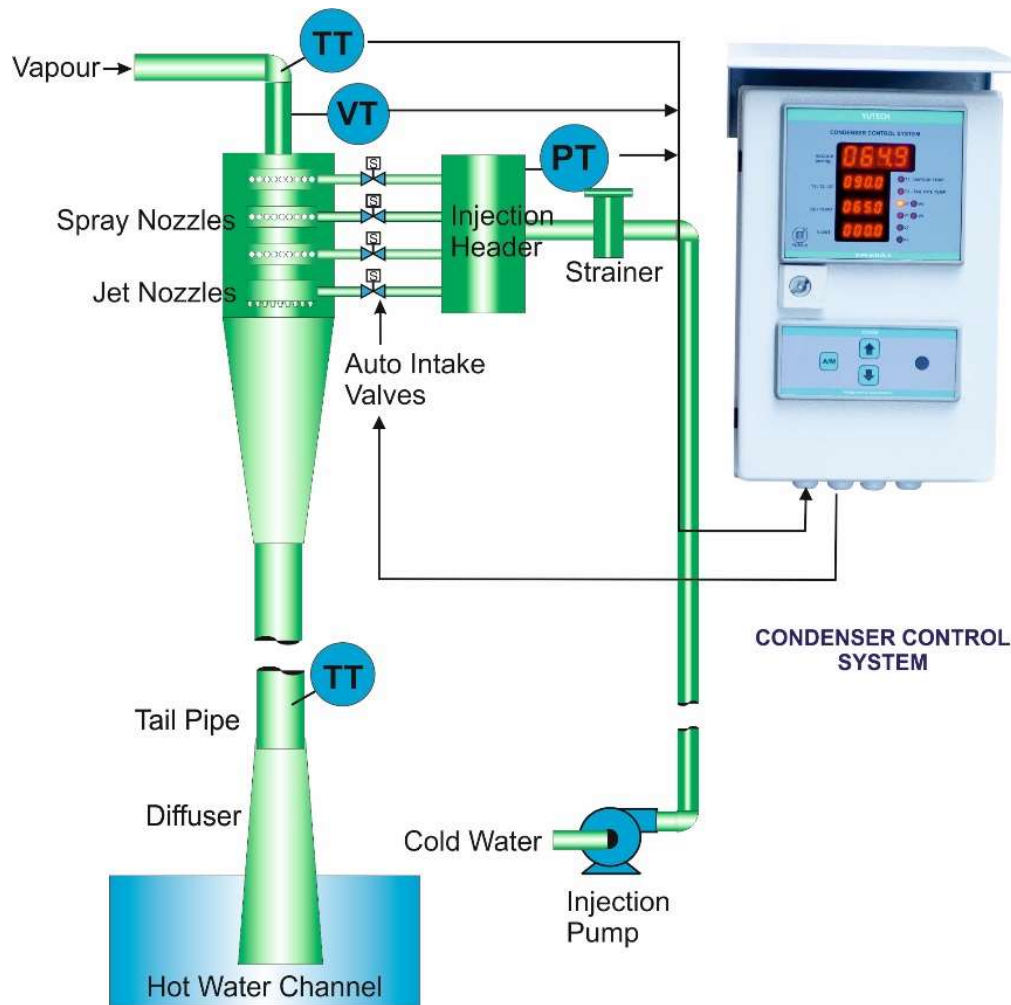
SCHEMATIC DIAGRAM: CONDENSER AUTOMATION USING YUTECH CONDENSER CONTROLLER

SCREEN SHOT: CONDENSER CONTROL SYSTEM IMPLEMENTED USING DCS / PLC



YUTECH

SCHEMATIC DIAGRAM AND SCREENSHOT: CONDENSER CONTROL



CONDENSER AUTOMATION:

- Separate Water Entry for Different Sets of Spray Nozzles and Spray Jet and Water Quantity is Automatically Controlled by ON/OFF Valve for Respective Nozzle Set Valve wrt Vacuum and Temperature difference between the Vapour and Condensate Tail Pipe
- Number of Jets & Nozzles and Jet & Nozzle Diameters designed as per Condenser Capacity
- Complete Stainless-Steel Construction, Strainer provided for each Condenser Header
- Water Pressure in the Common Injection Header maintained by Controlling Injection Pump VFD
- Jet Compartment Controlled by Separate Valve
- Vapour and Tail Pipe Temperature Measured

YUTECH'S POWERFUL AND RUGGED A12 PLATFORM BASED INSTRUMENTS:

VERY POWERFUL, A12 PLATFORM HAS DECENT ANALYTICAL ABILITY WITH HIGH-SPEED ETHERNET AND WIRELESS COMMUNICATION PROTOCOLS AND RUGGED FIELD MOUNTED ENCLOSURES



YUTECH

Instruments Specifically Designed and Manufactured for Sugar Mills having IP 67 protection class Enclosures:

- Cane Blanket Level Indicators & Transmitters with Sensor Options of:
 - Hall's Effect Type Sensors
 - Ultrasonic Type Sensors
- Mill Top Roller Lift Indicators & Transmitters with Sensor Options of:
 - Hall's Effect Type Sensors
 - Ultrasonic Type Sensors



Field Mounted Instruments having IP67 protection class Enclosures for any Process Applications:

- Field Mounted Universal Input Process Indicator & Transmitter with Ethernet / Wireless Communication Facility and 4-20mA Retransmission and 2 Potential-Free Relay Outputs
- Field Mounted Dual Channel Universal Input Process Indicator & Transmitter with Ethernet / Wireless Communication Facility and with two 4-20mA Retransmission and two Potential-Free Relay Outputs
- Field Mounted PID Controller and Time Proportionate PID Controller
- Field Mounted Customized Pre-fed Logic Indicators and Controllers
- Function Display
- Electro-Pneumatic Valve Positioner with Position Feedback
- Field Mounted Auto / Manual Stations with External Pot Facility
- Field Mounted Flow Totalizer



YUTECH'S A10 PLATFORM BASED INSTRUMENTS:

A10 PLATFORM IS DESIGNED FOR PROCESS INSTRUMENTS, INDICATORS, SCANNERS AND CONTROLLERS WITH HIGH-SPEED COMMUNICATION FACILITY AND PROTOCOL CONVERTERS



GENERAL INSTRUMENTS FOR ANY PROCESS APPLICATIONS:

- Universal Input Process Indicator & Transmitter
- Dual Channel Universal Input Process Indicator & Transmitter
- PID Controller
- Time Proportionate PID Controller
- Universal Input Jumbo Displays of Digit Sizes from 1" to 12"
- Universal Input Jumbo Displays of Digit Sizes from 1" to 12" with 4-20mA Retransmission and 2 Potential-Free Relay Outputs
- Modbus RTU Input Jumbo Displays of Digit Sizes from 1" to 12"
- Special Machine Controllers customized for YUTECH Machines
- Auto / Manual Stations with External Pot Facility
- 8 AND 16 Channel Scanner



I/O AND PROTOCOL CONVERTER PRODUCTS:

- Universal Input Process Indicator with Modbus RTU, 4-20mA Retransmission and 2 Potential-Free Relay Outputs
- 8 Channel Universal Input Card with Modbus RTU Communication
- 8 Channel Universal Input Card with Wireless Communication
- Wireless to Ethernet Protocol Converter
- Modbus RTU to Modbus TCP/IP Serial to Ethernet Protocol Converter
- EtherNetIP TO Modbus TCP/IP Protocol Converter

YUTECH'S A09 PLATFORM BASED INSTRUMENTS:

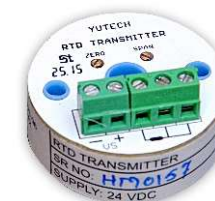
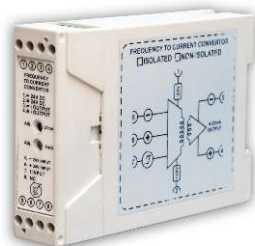
A09 PLATFORM PRODUCTS ARE INSTRUMENTS, SENSORS AND TRANSMITTERS OF INDUSTRIAL CATEGORY



YUTECH

YUTECH's A09 Platform based General Industrial Instruments:

- Head Mounted RTD Transmitters for Bearing Temperature Sensing
- Thermo-couple Temperature Transmitters - Panel Mounted / Field Mounted
- RTD Temperature Transmitters - Head Mounted / Panel Mounted / Field Mounted
- RPM Transmitters for All Types of Drives
- Current Transmitters for Electric Motor Drive Load Sensing
- Vacuum Transmitters
- Draft Range Negative & Positive Composite Range Pressure Transmitters
- General Process Indicators
- General Field Mounted Process Indicators



YUTECH'S INTELLIGENT A15 PLATFORM BASED ANALYZERS AND SYSTEMS:

INTELLIGENT & VERY POWERFUL, A15 PLATFORM HAS ANALYTICAL AND HIGHER I/O HANDLING ABILITY WITH COMMUNICATION FACILITY FOR ETHERNET AND WIRELESS PROTOCOLS



FIELD MOUNTED ANALYZERS AND CONTROL SYSTEMS FOR PROCESS, PHARMA, DAIRY AND SUGAR INDUSTRY:

SUGAR PROCESS ANALYZERS AND CONTROLS:

- **HIGH FREQUENCY BRIX ANALYZER AND BRIX ANALYZER AND AUTO-RETRACTABLE SELF-CLEANING BRIX SENSOR**
- **FLUID-DENSITY-BRIX ANALYZER CUM CONTROL SYSTEM AND MOTORIZED FLUID DENSITY SENSOR**
- **CONDUCTIVITY ANALYZER**
- **PH ANALYZER**
- **CONTINUOUS CENTRIFUGAL MACHINE AUTOMATION SYSTEM USING CONCENTRIC SPLIT DIAPHRAGM CONTROL VALVE ALSO CALLED IRIS VALVE.**
- **CONDENSER CONTROL SYSTEM: MULTIPLE OR SINGLE WATER SPRAY AND JET ENTRY CONDENSER CONTROLS.**

SUGAR MILL AND BOILER ANALYZERS AND CONTROLS:

- **INFRA RED TYPE LEVEL SENSING AND TRANSMISSION SYSTEM: SUGAR MILL DONNELLY CHUTES.**
- **INFRA RED TYPE LEVEL SENSING AND TRANSMISSION SYSTEM: BOILER BAGASSE SILOS OR CHUTES.**
- **CAPACITIVE TYPE LEVEL SENSING AND TRANSMISSION SYSTEM: SUGAR MILL DONNELLY CHUTES.**

DATA ACQUISITION AND COMMUNICATION:

- **FIELD MOUNTED DATA ACQUISITION AND COMMUNICATION SYSTEM: ETHERNET / WIRELESS COMMUNICATION**
- **IOT FIELD MOUNTED DATA ACQUISITION AND COMMUNICATION SYSTEM: PROCESS DATA TRANSMISSION AND INTERNET COMMUNICATION ON GSM AND WIFI**
- **16 CHANNEL SCANNER WITH MODBUS RTU**
- **16 CHANNEL SCANNER WITH MODBUS TCP/IP**



YUTECH

YUTECH SUGAR MILL PROCESS INSTRUMENTS

MEASURING SUGARS BRIX BY BRIX

YUTECH FLOW CONTROLS

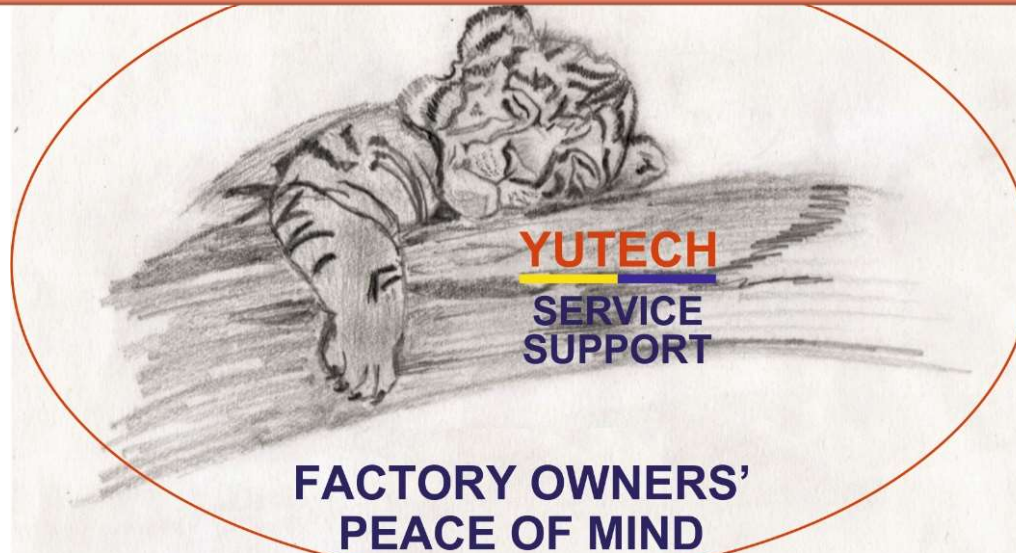
CONTROL SAVE EARN

YUTECH AUTOMATION

THE SWEETENER TO SUCCESS

YUTECH INSTRUMENTS

ANALYZE TRANSMIT CONTROL COMMUNICATE



**SAVE FUEL, REDUCE CARBON FOOTPRINT,
MAKE THE WORLD GREENER
AND YET, MAKE MONEY**

THANK YOU

www.yutechautomation.com; www.yutech.in; sale@yutech.in