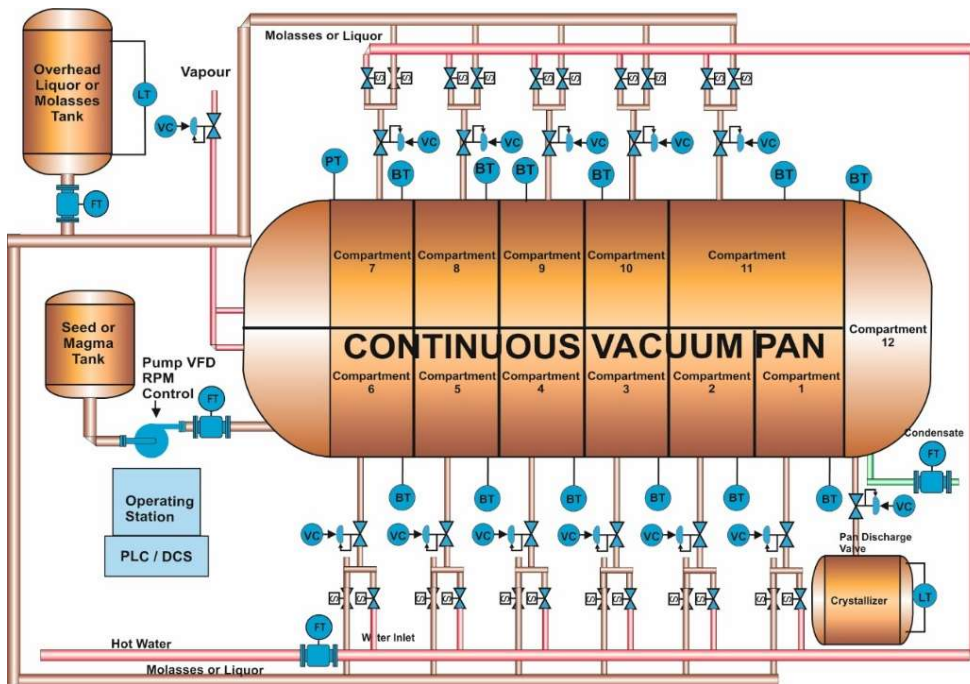
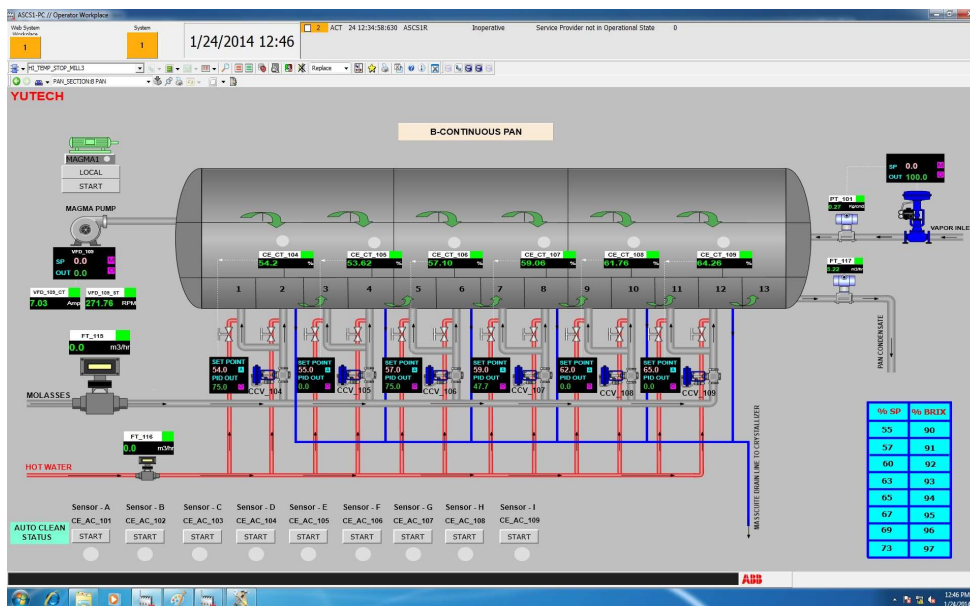


CONTINUOUS VACUUM PAN AUTOMATION, MOLASSES CONDITIONER AUTOMATION AND SUGAR METER AUTOMATION BASED ON BRUX ANALYZER



CONTINUOUS PAN AUTOMATION FEATURES:

- SEED OR MAGMA FLOW CONTROL WITH RESPECT TO MOLASSES OR LIQUOR FLOW ENSURES MAINTAINED MOLASSES-TO-SEED RATIO
- YUTECH FLUID-DENSITY-BRIX OR YUTECH BRIX SENSING AND MOLASSES / WATER INTAKE CONTROL FOR EACH COMPARTMENT
- TEMPERATURE SENSING THROUGHOUT THE CV PAN ENSURES UNIFORM TEMPERATURE INSIDE THE CV PAN BODY
- CALENDRIA VAPOUR PRESSURE CONTROL
- STANDALONE SYSTEM FOR CV PAN HAVING COMMUNICATION WITH MAIN PLC / DCS SYSTEM



CONTINUOUS VACUUM PAN AUTOMATION:

Seed or Magma Flow Control with respect to Molasses or Liquor Flow:

- Molasses and Seed Flowmeters sense Flow.
- Ratio Controller delivers exact Flow of Seed wrt Molasses Quantity by Controlling Seed / Magma Pump VFD.

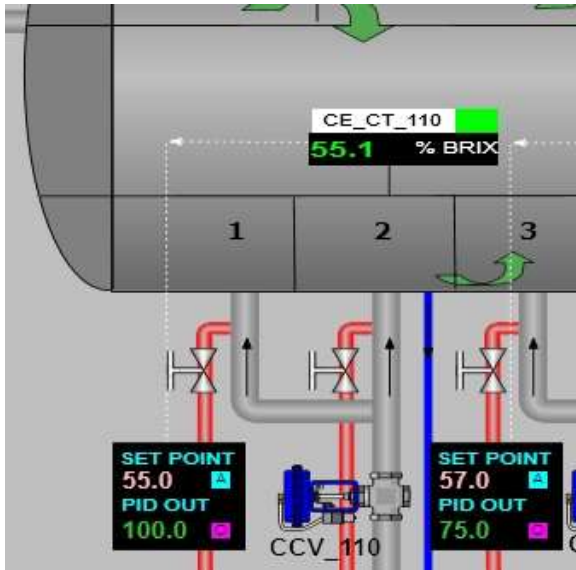
Individual Compartment Brix Control by Auto Feeding Molasses or Water into each Compartment:

- Fluid-Density-Brix OR Brix Sensing of each Compartment by YUTECH Fluid-Density-Brix Analyzer OR YUTECH Brix Analyzer
- Control of Molasses Intake Valve w.r.t., Brix Set Point, and Process Value in a PID Mode
- Addition of Water only if required as per Process Dynamics.

CONTINUOUS VACUUM PAN AUTOMATION, MOLASSES CONDITIONER AUTOMATION AND SUGAR METER AUTOMATION BASED ON BRIX ANALYZER



PARTIAL SCREEN SHOT OF BRIX READING ON CVP AUTOMATION SCADA

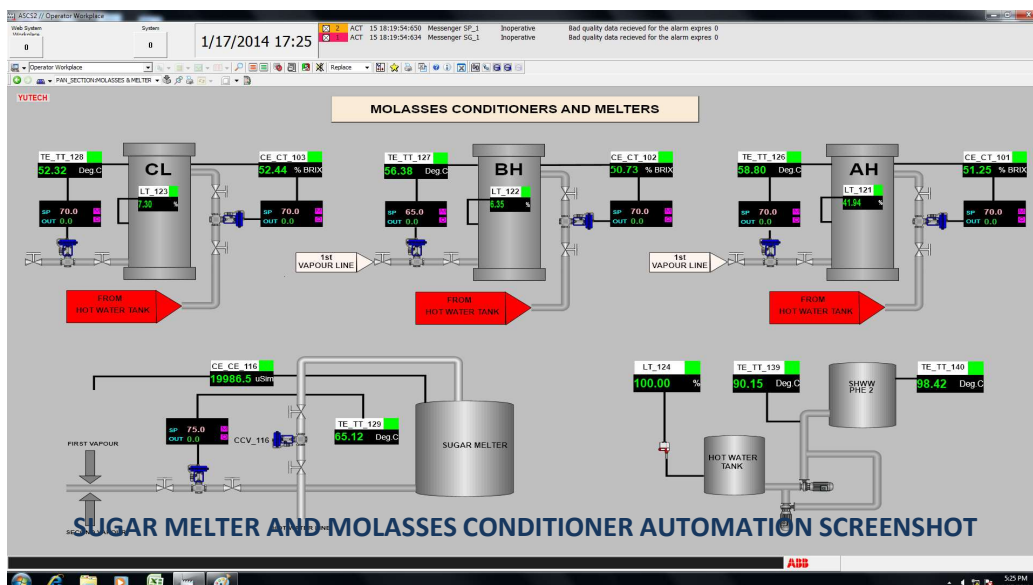
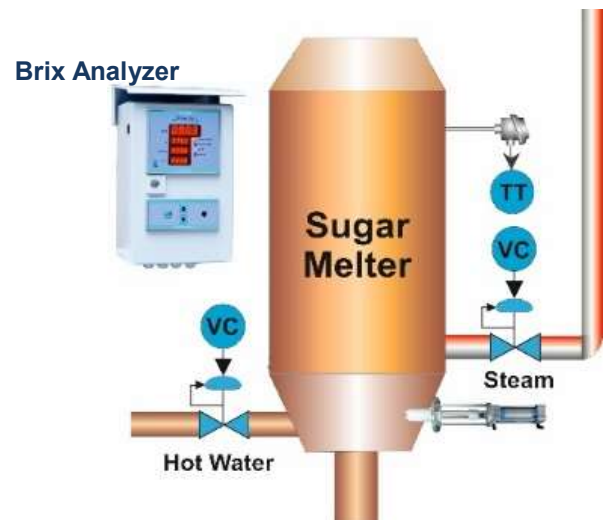
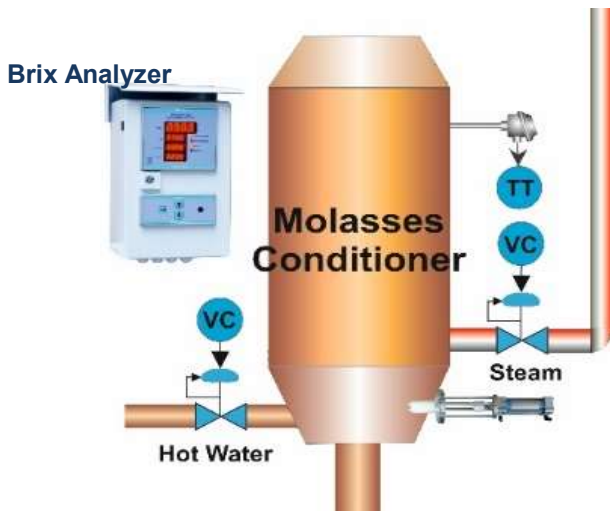


SUGAR MELTER AUTOMATION INSTALLATION PICTURE:



MOLASSES CONDITIONER AUTOMATION:

SUGAR MELTER AUTOMATION:



SUGAR MELTER AND MOLASSES CONDITIONER AUTOMATION SCREENSHOT

CONTINUOUS VACUUM PAN AUTOMATION, MOLASSES CONDITIONER AUTOMATION AND SUGAR METER AUTOMATION BASED ON BRIX ANALYZER



Sugar Melter Automation Advantages:

- Streamlined Process due to Constant and Maintained Outlet Brix and Temperature.
- Ensure Constant Quality of Melt Feed to Pans.
- Reduce Heat Waste, due to Overheating or Under Dilution or Over Steaming.
- Reduce Process Time by avoiding Over Dilution.
- Thus Save Time, Steam, and Water and Ensure more throughput in lesser time.
- Increase Profitability.

Control Loops:

Sugar Melt Brix Control using Brix or Fluid-Density-Brix Analyzer:

- Sugar Melt Brix are maintained by the controlled addition of Hot Water using a Control Valve in a PID Loop with the Sugar Melt Fluid-Density-Brix / Brix sensed by Fluid-Density-Brix Analyzer or High-Frequency Brix Analyzer as the Process Variable for PID Control..

Sugar Melt Temperature Control:

- Sugar Melt Temperature is maintained constant by controlled application of Steam using a Control Valve in a PID Loop with Sugar Melt / Molasses Temperature as the Process Variable for PID Control.

Molasses Conditioner Automation Advantages:

- Streamlined Process due to Constant and Maintained Outlet Brix and Temperature.
- Ensure Constant Quality of Molasses Feed to Pans.
- Reduce Heat Waste, due to Overheating or Under Dilution or Over Steaming.
- Reduce Process Time by avoiding Over Dilution.
- Thus Save Time, Steam, and Water and Ensure more throughput in lesser time.
- Increase Profitability.

Control Loops:

Molasses Brix Control using Brix or Fluid-Density-Brix Analyzer:

- Sugar Melt Brix are maintained by the controlled addition of Hot Water using a Control Valve in a PID Loop with the Sugar Melt Fluid-Density-Brix / Brix sensed by Fluid-Density-Brix Analyzer or High-Frequency Brix Analyzer as the Process Variable for PID Control..

Molasses Temperature Control:

- Sugar Melt Temperature is maintained constant by controlled application of Steam using a Control Valve in a PID Loop with Sugar Melt / Molasses Temperature as the Process Variable for PID Control.

YUTECH BRIX ANALYZER (HIGH-FREQUENCY BRIX ANALYZER) AND AUTO-RETRACTABLE SELF-CLEANING BRIX SENSOR

BASED ON YUTECH'S A15 INTELLIGENT ANALYZERS AND SYSTEMS PLATFORM



BRIX ANALYZER



BRIX SENSOR



**BRIX ANALYZER
CONTROLLER**

Brix Analyzer and Sensor combination targets sensing of Suspended Solid Content (Brix) in Slurries or Syrups like Sugar Masecuite, Sugar Syrup, Sugar Melt and Molasses. Brix Analyzer plays a crucial role in Sugar Process Automation and helps in Stabilizing the overall Sugar Process.

The YUTECH Intelligent Programmable Brix Analyzer is a State-of-the-Art System having Built-in Fuzzy Logic for Automatic Purity Compensation to Accurately Sense, Analyze, Calculate and Derive Masecuite Brix within a Band of varying Purity with Temperature Compensation. This Logic is called Brix Equation and it results in accurate Brix Sensing.

The YUTECH Brix Sensor is Auto-Retractable Self-Cleaning and Self-Washing Brix Sensor. This technique prevents Media Deposits on Sensor Electrode thus always results in Accurate Readings.

Accurate Brix reading ensures better Process Control and helps to maintain constant Masecuite / Melt / Molasses / Syrup Quality and Steam / Vapour Requirement thus results in Higher Sugar Production Efficiency and Minimum Process Losses.

SALIENT FEATURES:

- Brix Sensor Detects Signal Deviation with respect to Solution Brix
- This Signal Deviation is then Processed in Analyzer to obtain Brix Reading
- YUTECH Brix Analyzer is equipped with Intelligent Auto Purity Compensation Algorithm to derive the Brix accurately in Masecuites of varying Purity
- Very Easy Calibration and Online Brix Compensation Recalibration
- In-Built Automatic Temperature Compensation
- In-Built Self Cleaning and Washing of Sensor with pre-adjustable timing cycle
- 4-20 mA Output, Separate Modbus and Ethernet Communications
- On-line Calibration Software "YUTECH-AccessApp" provides Remote Access to Brix Analyzer for Calibration, Compensation and Trouble Shooting.

FOR MORE DETAILS ON THE BRIX ANALYZER DOWNLOAD BROCHURE FROM OUR WEBSITE.

FOR MORE DETAILS, PLEASE SEE THE PRESENTATION ON OUR WEBSITE www.yutechautomation.com.

CHANNEL PARTNER:

YU Technologies Pvt. Ltd.

HO & Works: B 8/5, MIDC, Miraj, 416 410, Distt: Sangli, Maharashtra, India.

T: +91 233 2644042, +91 916 832 4851, +91 916 832 5127 / 8.

E: info@yutech.in; sale@yutech.in W: www.yutech.in; www.yutechautomation.com