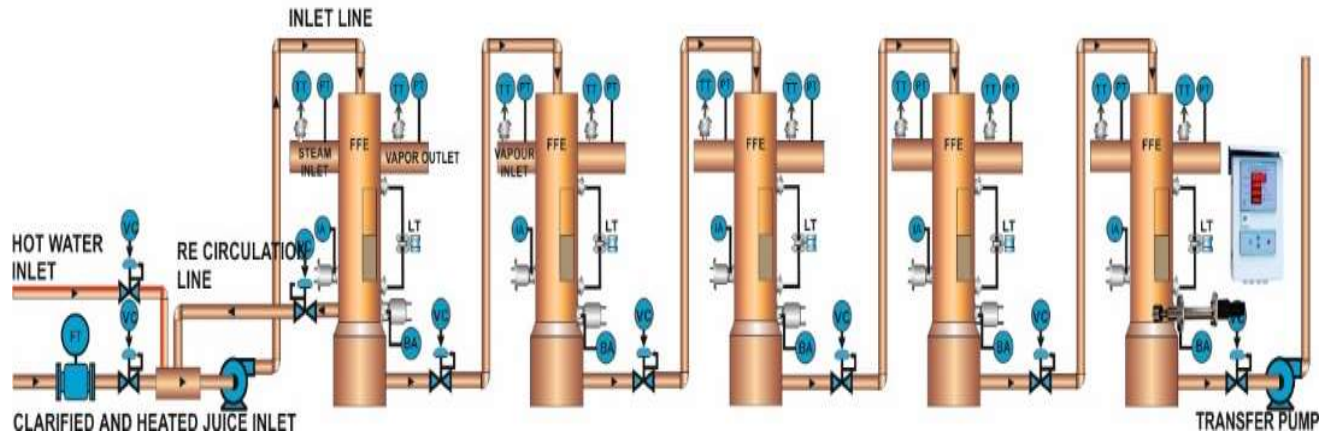


FFE AUTOMATION WITH BRIX ANALYZER AND DENSITY BRIX SENSOR FALLING FILM EVAPORATOR AND CONDENSER CONTROLS



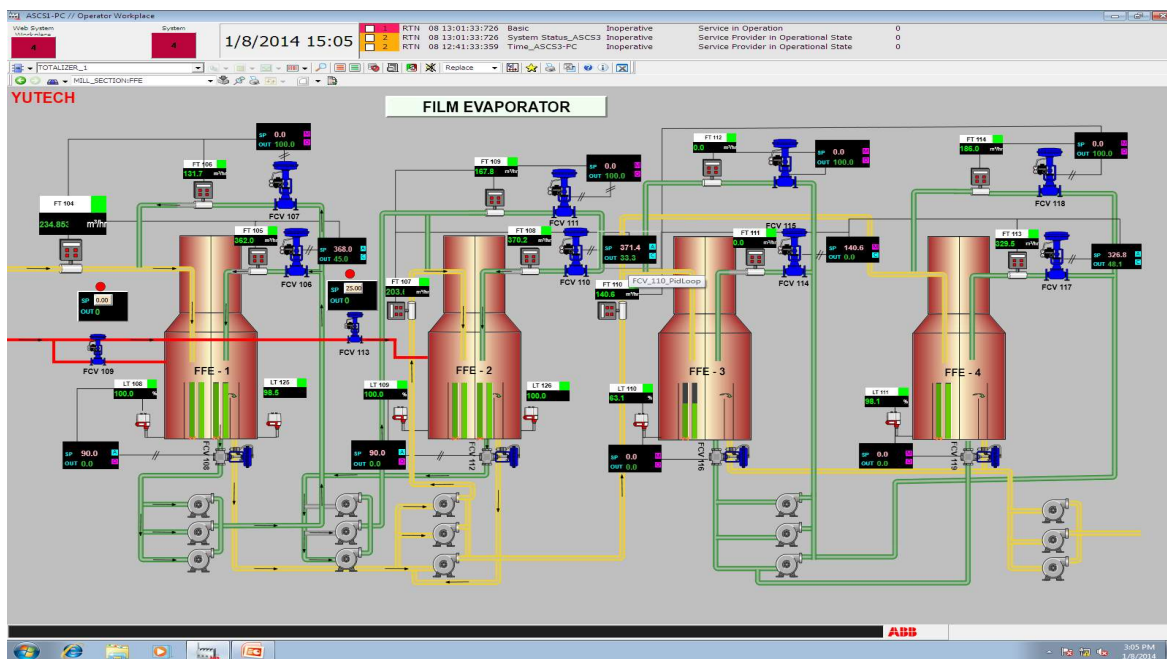
FALLING FILM EVAPORATOR AUTOMATION:



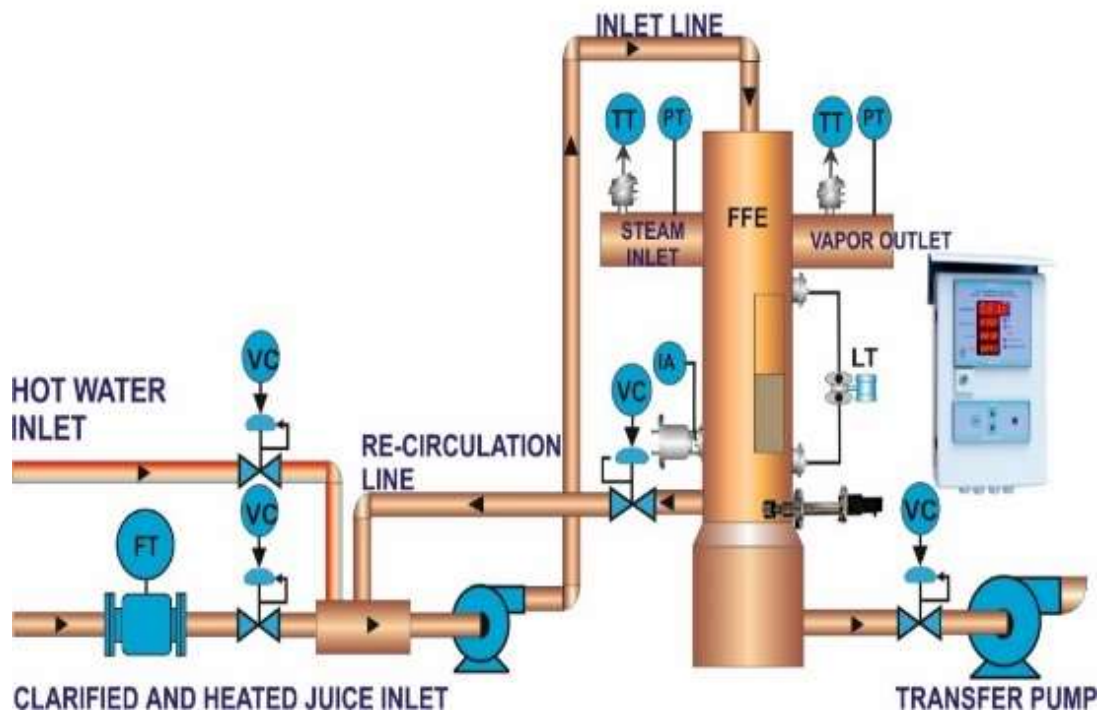
EVAPORATOR / FALLING FILM EVAPORATOR AUTOMATION ADVANTAGES:

- MAINTAINED LAST BODY BRIX HENCE EFFICIENT FURTHER PROCESSING AND PAN BOILING PRODUCES BETTER SUGAR YIELD
- MAINTAINED BODY LEVEL AND TEMPERATURE OF EACH BODY HENCE EXCELLENT MASS BALANCE ACHIEVED
- CONSTANT EVAPORATION RATE IS MAINTAINED, THIS INCREASES OVERALL EFFICIENCY
- AUTO EXHAUST STEAM CONDENSATE BYPASS PREVENTS ENTRAINMENT
- SYNCHRONIZATION FOR ALL BODIES INCLUDING JUICE TANKS AND CANE CARRIERS AVOIDS JUICE AND STEAM WASTAGE
- INTELLIGENT DATA ANALYSIS WITH MAINTENANCE AND CLEANING ALARMING SYSTEM REDUCES INVERSION AND IMPROVES SUGAR RECOVERY
- GENERATES HUGE MONETARY BENEFITS

SCREENSHOT: FALLING FILM EVAPORATOR AUTOMATION



SCHEMATIC DIAGRAM: SINGLE FALLING FILM EVAPORATOR AUTOMATION



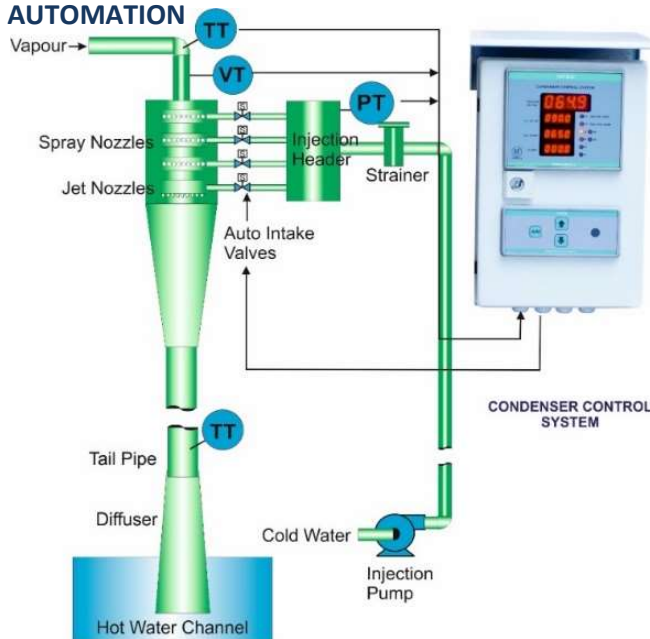
FALLING FILM EVAPORATOR (FFE) AUTOMATION:

- EVAPORATOR LEVEL IS MAINTAINED FOR PROPER EVAPORATION AND VAPOUR GENERATION BY CONTROLLING THE TRANSFER VALVE OR TRANSFER PUMP VFD.
- INLET FLOW TO THE FFE BODY IS CONTROLLED AS PER PRESET VALUE.
- THE RECIRCULATION VALVE IS CONTROLLED IN EQUAL PROPORTION TO INTAKE OR ALSO CAN BE CONTROLLED AS PER A PRESET PROPORTION IN PERCENT TERMS. THIS IS EASILY ADJUSTABLE FROM THE HMI / SCADA.
- WATER IS INTRODUCED AUTOMATICALLY ONLY IF REQUIRED.
- OPTIONAL INLET, RECIRCULATION, AND BYPASS FLOW MEASUREMENT AND CONTROL ARE PROVIDED.
- TRANSFER, RECIRCULATION, AND INTAKE ARE ALSO CONTROLLED BY THE REQUIRED OUTLET BRIX AS AN OVERRIDING CONTROL.
- ACCURATELY MAINTAINED BRIX VALUE ENSURES HIGHER EFFICIENCY IN THE FURTHER PROCESS.

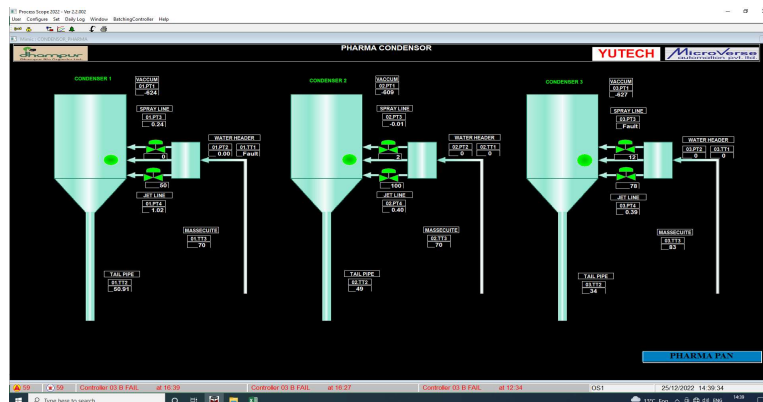
CONDENSER AUTOMATION PHILOSOPHY:

- VAPOUR VACUUM AND TEMPERATURE SENSED
- CONDENSATE TEMPERATURE SENSED IN TAIL PIPE
- TEMPERATURE DIFFERENCE CALCULATED
- VACUUM AND TEMPERATURE DIFFERENCE ARE BOTH ANALYZED TO DERIVE REMOTE DYNAMIC SET POINT
- SPRAY WATER IS CONTROLLED AS BELOW:
 - MULTI-ENTRY SYSTEM:
 - SPRAY JETS ARE CONTROLLED BY SEPARATE ON/OFF TYPE CONTROL VALVES AS PER THE REMOTE DYNAMIC SET-POINT
 - 2, 3, OR 4 SETS OF NOZZLES FOR SPRAY AS PER DESIGN
 - 1 OR 2 SETS OF JET NOZZLES AS PER DESIGN ARE CONTROLLED ONLY IF NECESSARY
 - SINGLE-ENTRY SYSTEM:
 - SPRAY JETS ARE CONTROLLED BY A CONTROL VALVE IN PID ACTION AS PER THE REMOTE DYNAMIC SET-POINT
 - 1 OR 2 SETS OF JET NOZZLES AS PER DESIGN ARE CONTROLLED ONLY IF NECESSARY

SCHEMATIC: CONDENSER AUTOMATION



SCREENSHOT: FFE AND CONDENSER AUTOMATION



BRUX AND DENSITY ANALYZER AND FLUID DENSITY BRUX SENSOR ONLINE MEASUREMENT, ANALYSIS, AND TRANSMISSION OF BRUX AND DENSITY



FLUID DENSITY BRUX ANALYZER
CUM CONTROL SYSTEM



FLUID DENSITY SENSOR FOR ALL PAN MASSECUTES AND
SYRUP IN BATCH PANS, HORIZONTAL AND VERTICAL
CONTINUOUS PANS, EVAPORATOR, MELTER,
MOLASSES CONDITIONER, SLOPE, LIME BAUME,

APPLICATIONS IN SUGAR INDUSTRY:

- BRUX OF ALL FALLING AND RISING FILM EVAPORATOR BODIES, SYRUP TO JUICE MIXING VESSELS:
 - IMPROVE EVAPORATION EFFICIENCY AND STEAM ECONOMY
- BRUX OF SYRUP, MASSECUTE AND MELT BRUX OF ALL BATCH PANS, VERTICAL AND HORIZONTAL CONTINUOUS PANS, MOLASSES CONDITIONERS, SUGAR MELTERS:
 - REDUCE STRIKE TIME, AVOID FALSE GRAIN, REDUCE STEAM AND WATER CONSUMPTION
 - OPTIMIZE CRYSTAL GROWTH AND MAXIMIZE RECOVERY
- BAUME OF MILK OF LIME

DISTILLERIES, BREWERIES, WINERIES, AND FOOD AND BEVERAGES INDUSTRIES:

- BRUX OF SLOPE OR SPENT WASH, BRUX OR WORT OF FERMENTATION TANKS, MUST, WINE, FRUIT PULP, SAUCE, SLURRY, PASTE

PLEASE CHECK THE BRUX AND DENSITY ANALYZER BROCHURE

PLEASE VISIT OUR WEBSITE www.yutechautomation.com.

YU Technologies Pvt. Ltd.

HO & Works: B 8/5, MIDC, Miraj, 416 410, Distt: Sangli, Maharashtra, India.

T: +91 233 2644042, +91 916 832 4851, +91 916 832 5127 / 8.

E: info@yutech.in; sale@yutech.in

W: www.yutech.in; www.yutechautomation.com

CHANNEL PARTNER: